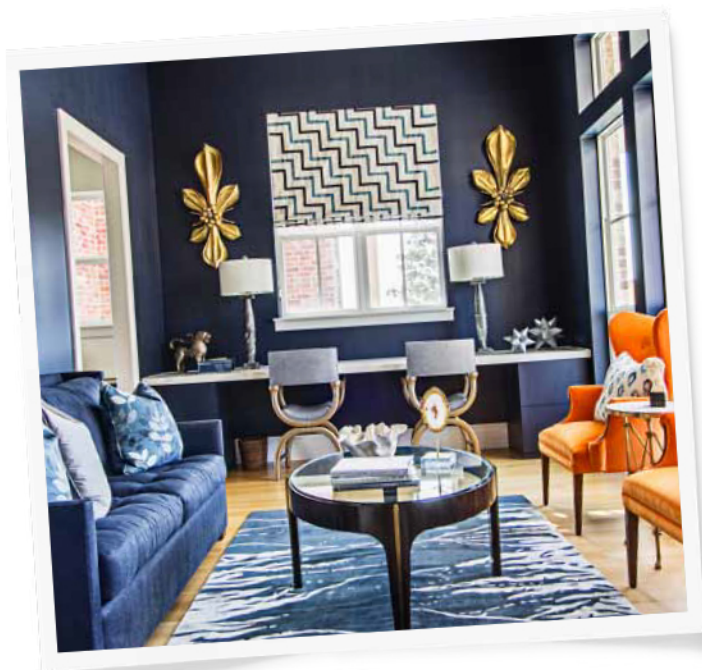


COLOR



PAINT

For Sunny Rooms

Go with the warmth or temper it with hues that range from bright to soothing.



HALE NAVY HC-154
BENJAMIN MOORE

"Here in the South, a sunny room can quickly get blazing hot. Texans will do anything to escape the heat, including enveloping a room in a dark color to drop its visual temperature. This navy blue evokes a cool and peaceful starry night sky. It's deep enough not to get washed out by the sun and matte enough to absorb the light."

EMILY LARKIN



LAVENDER CLOUD
90BB 67/069
GLIDDEN

"The secret to this lavender is that it moves toward gray. It's a suggestion of lavender, rather than dead-on, so it can be very ethereal in the sun and then deeper in the evening. It's a good universal shade—soft and soothing in a bedroom or elegant and quiet in a living room."

JAMES RADIN



IVORY PALM 6012P
FINE PAINTS OF EUROPE

"This classic yellow would make any room cheerful. It absorbs the light and bounces it right back, so when the sun shines, it absolutely glows. Yellow is a tricky color, and this is one of a handful that I use. It works because it looks beautiful—and it makes people look beautiful, too."

MICHAEL WHALEY



SPICY BANANA PEPPER
50YY 60/538
GLIDDEN

"For a sunroom, I like this acidic yellow with undertones of green and brown, to ground it and keep it from feeling too saccharine. Colors appear lighter in bright rooms, so go a shade deeper than you first think. Layer in sea grass, overstuffed wicker furniture, maybe a pop of coral, and creamy white trim. It will feel happy by day and sophisticated by night."

PALMER WEISS



TICKLED PINK 2002-50
BENJAMIN MOORE

"I'm not the type to overthink things. When I found a vintage dhurrie in hot pink for a media room, I knew instantly that the ceiling should play it up. Painting it this really bold pink would ensure that the room is always cheery, even when the sky outside is gray."

J. RANDALL POWERS



SAN DIEGO CREAM 921
BENJAMIN MOORE

"This rich and versatile cream is my go-to hue, especially when it comes to decorating sun-drenched spaces. A pure white would be too sharp, but this picks up on the softer qualities of daylight. It subtly changes throughout the day and envelops a room in warmth at night."

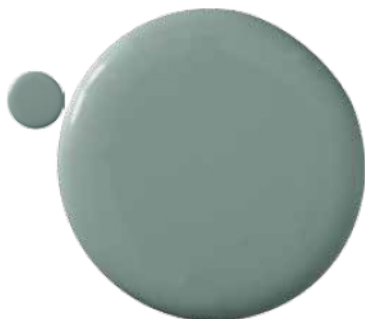
SUZANNE TUCKER

PRODUCER CHRISTINE PITTEL PHOTOGRAPHER LANCE SELGO. FOR MORE DETAILS, SEE RESOURCES

COLOR



House Beautiful's iPad app—available on iTunes—makes it easy to find the perfect color for any project. A special feature also picks the best complementary colors.



CHAPPELL GREEN 83
FARROW & BALL

"This beautiful blue-green is one of the most multidimensional colors I have ever seen. In a space with lots of natural light, it registers as more green. Then, as the sun goes down, it appears bluer. I love that metamorphosis. It makes a room so intriguing."

TY LARKIN



TEMPTATION 1609
BENJAMIN MOORE

"In the Mississippi Delta, the sun can be overpowering at midday, when my client is in her study. So I painted the walls, moldings, and bookcases in this flint gray, a true gray that doesn't go purple or blue. With bleached floors, a white ceiling, and Belgian linen on the furniture, the room feels cool and calm."

NANCY PRICE



EVENING BLUE 2066-20
BENJAMIN MOORE

"I'll often use this Yves Klein blue to dramatize a room. Paint it on one wall and you are instantly transported to an island in Greece, where you'll see this hue in the water and on window frames against white-washed walls. It makes me feel as if I'm basking in the sun."

ROGER DE CABROL



HIGH STRUNG SW 6705
SHERWIN-WILLIAMS

"This is a brilliant green, deeper than chartreuse. It's kind of like sunlight through a leaf. And it comes as a surprise in the library of an apartment in an all-glass skyscraper, where the rest of the rooms are fairly beige. It reminds you of the grass and the greenery outside."

DAVID MANN



STILL WATER SW 6223
SHERWIN-WILLIAMS

"When the sun hits a wall, it takes the color down a notch or two. But this dark teal blue, with undertones of gray and green, is dark enough that it still looks rich and interesting. I used it on the sunporch of a 1920s Dutch Colonial, where it was a nice complement to terra-cotta floors. The unexpected color draws you into the room."

JOAN ENGER



LIME RICKY 393
BENJAMIN MOORE

"I like a light but bright color in a sunny room. This yellow-green is so refreshing and crisp, you almost feel as if you're sipping a lime daiquiri by the pool! And like rum, it mixes well with anything. Pair it with navy blue to go preppy, pink to go bold, or chocolate brown to tone it down."

PHOEBE HOWARD

PHOTOGRAPH BY CHER CHAU CHENIER